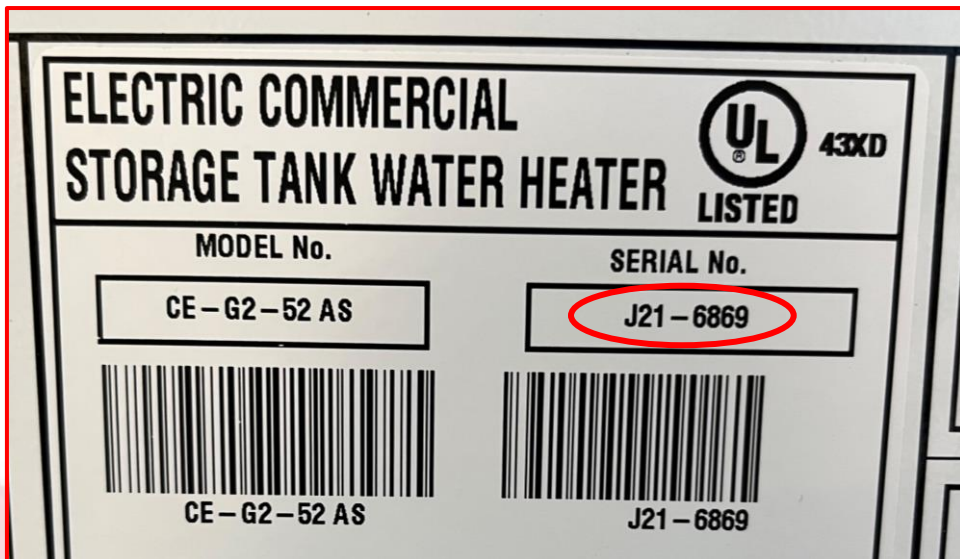


How to decode Ariston product serial numbers



The following format is used for all products except for the Hybrid Heat Pump Water Heater.

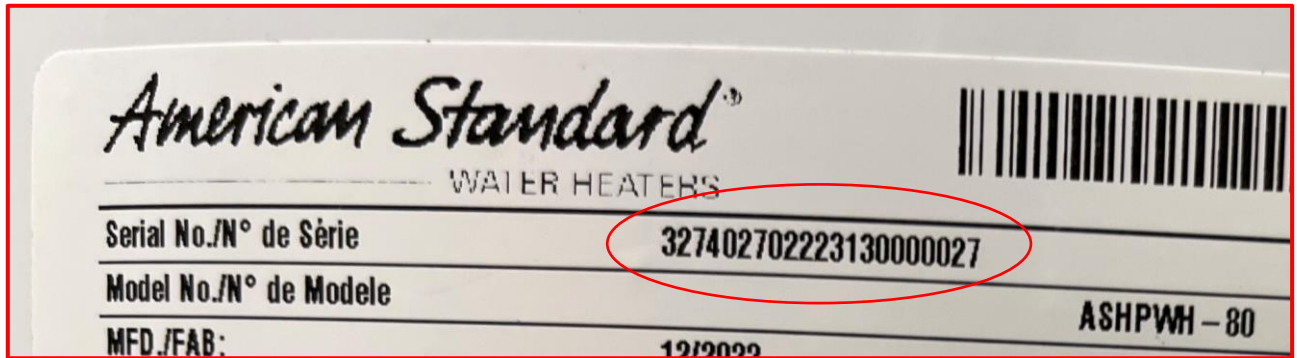


In the example above, the serial number is J21-6869. The first letter represents the month of production, and the two following numbers are the year of production. J21 = September of 2021. The remaining numbers are unique to the water heater and do not hold other useful information.

A	January
B	February
C	March
D	April
E	May
F	June

G	July
H	August
J	September
K	October
L	November
M	December

The following format is only used for the Hybrid Heat Pump Water Heater.



In the example above, the serial number is

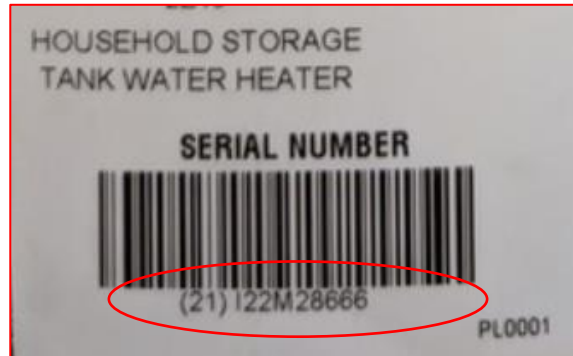
3274027**02****22****313****0000027**

These should always contain 21 characters and breakdown as follows:

- 3274027** – The material code that is used to order the product from Ariston and is unique for each model
- 02** – An internal reference to which Ariston factory manufactured the product
- 22** – The year the product was manufactured - 2022
- 313** – The day of the calendar year that the product was manufactured – 313 = November 9th
- 0000027** – A unique number to separate products made on a single day of production



The following format was used from 1994 through 2011



In the example above, the serial number is

I22**M**28666

These serial numbers breakdown as follows:

- I** – The first letter in the serial number represents the month the product was manufactured. I = September
- 22** – These two numbers represent the day of the month the product was manufactured. 22nd day
- M** – The second letter in the serial number represents the year the product was manufactured. M = 2006
- 28666** – A unique number to separate products made on a single day of production

Please review the letter decoding below

1 st Letter	Month
A	January
B	February
C	March
D	April
E	May
F	June
G	July
H	August
I	September
J	October
K	November
L	December

2 nd Letter	Year
A	1994
B	1995
C	1996
D	1997
E	1998
F	1999
G	2000
H	2001
I	2002
J	2003
K	2004
L	2005
M	2006
N	2007
O	2008
P	2009
Q	2010
R	2011

Examples:

C18D12345 = March 18th, 1997

H04K12345 = August 4th, 2004

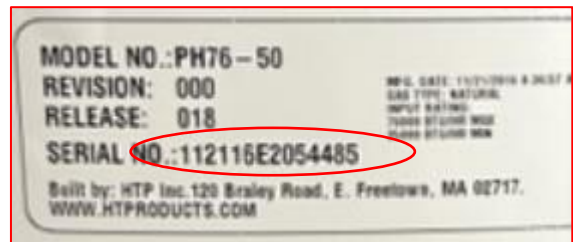
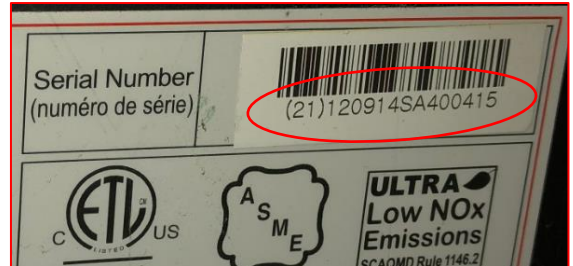
I12I12345 = September 12th, 2002

I26L12345 = September 26th, 2005

L09P12345 = December 9th, 2009



The following format was used from 2011 through September 2021



In the one of the examples above, the serial number is

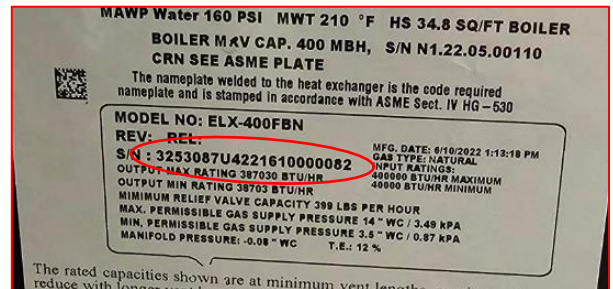
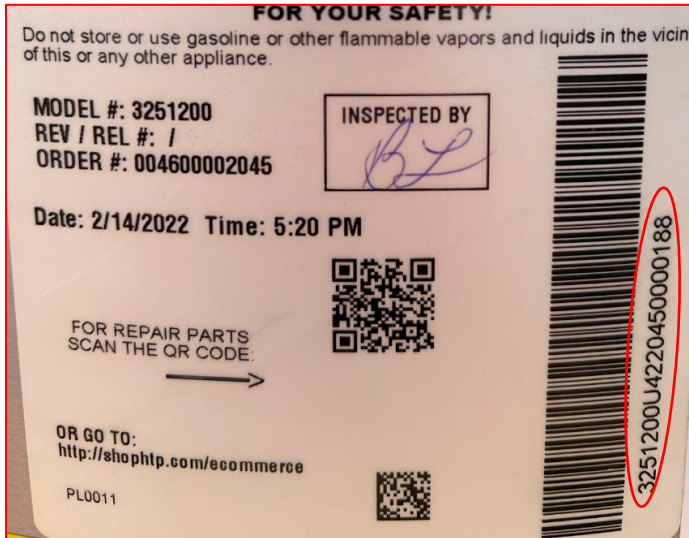
112116E2054485

These serial numbers breakdown as follows:

- 11 – The first two numbers in the serial number represent the month the product was manufactured. 11 - November
- 21 – These two numbers represent the day of the month the product was manufactured. 21st day
- 16 – These two numbers represent the year the product was manufactured. 16 = 2016
- E – A letter that represented the specific production line the product was processed through
- 2054485 - A unique number to separate products made on a single day of production



The following format has been used since September 2021



In the example above, the serial number is

3251200U4220450000188

These should always contain 21 characters and breakdown as follows:

3251200 – The material code that is used to order the product from Ariston and is unique for each model

U4 – An internal reference to which Ariston factory manufactured the product

22 – The year the product was manufactured - 2022

045 – The day of the calendar year that the product was manufactured – 045 = February 14th

0000188 – A unique number to separate products made on a single day of production