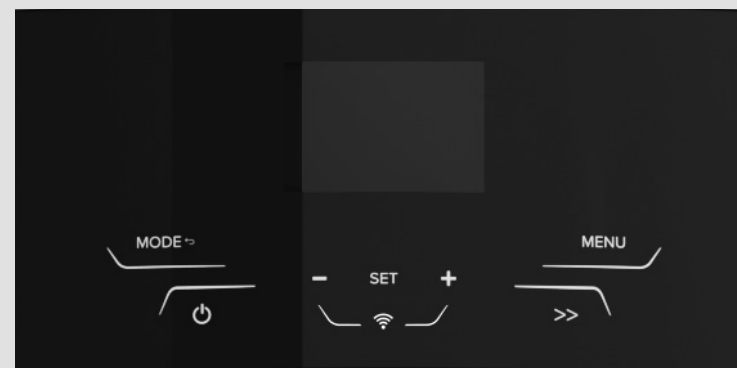


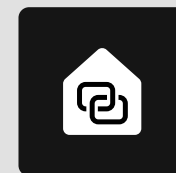


info.connectivity@ariston.com

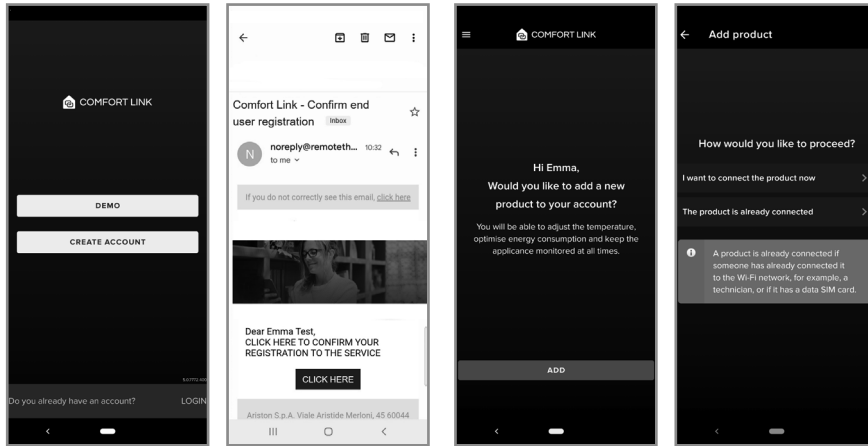


COMFORT LINK Quick Start Guide

Compatible with
Hybrid Heat Pump Water Heater

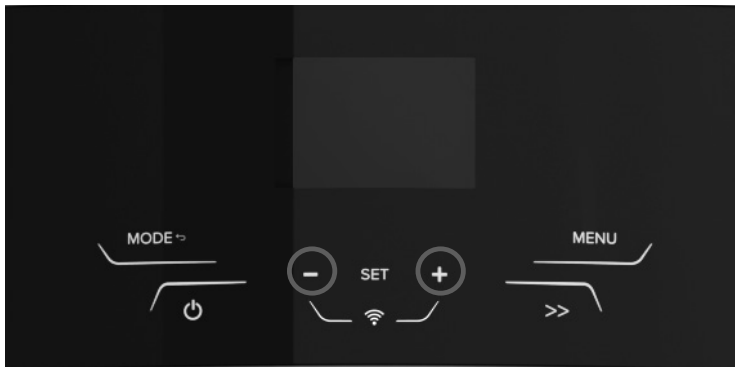


1 CREATING THE ACCOUNT AND LOGGING IN



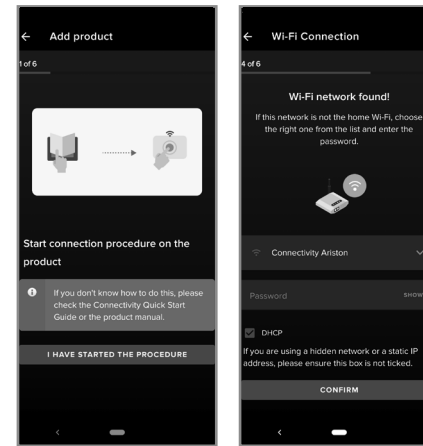
- Download the app for free from the Apple store or the Google Play store.
- Click on “Create account” and fill in the fields. Open the Ariston NET email and click on the link to confirm your account.
- Log in to Ariston NET, click on “Add” to add the product to your account and follow the wizard. To facilitate the next steps, you should allow the permissions requested by the app. Check that your Wi-Fi connection is stable.
- Choose whether to connect the product now or if it’s already online

2 STARTING THE CONNECTION PROCEDURE ON THE PRODUCT



- If the product has never been connected to the Wi-Fi, you'll see “On” flashing on the display and “Wi-Fi” written below. Press «SET» to confirm and start the connection on the product.
- Alternatively, press « + » and « - » together to turn the Wi-Fi on (the Wi-Fi icon will flash slowly). Press « + » and « - » together for 5 seconds to start the network configuration procedure (“AP” will appear on the display and the Wi-Fi icon will flash fast).

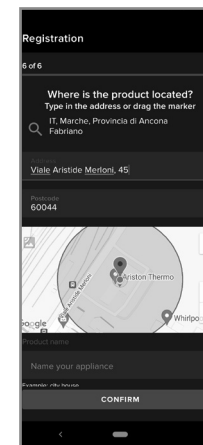
3 CONFIGURING THE WI-FI



- Once “AP” is showing on the product’s interface, go back to the app and click “I have started the procedure”
- A prompt to join “Remote GW Thermo” should appear in the app. Click to connect to the product and start the Wi-Fi set up
- Select the correct home Wi-Fi network and enter the password.

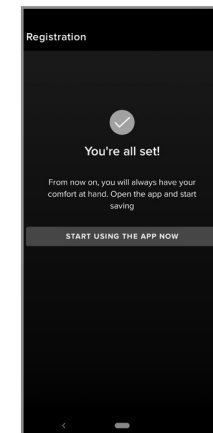
WARNING: THE PRODUCT ONLY CONNECTS TO WI-FI NETWORKS WITH A 2.4 GHZ FREQUENCY.

4 REGISTERING THE PRODUCT



- If the suggested address is not correct, type in the correct one using the magnifying glass or drag the cursor to the right position.
- Choose a name for your product, i.e. “Mario’s house”.

5 PROCEDURE COMPLETED



- The procedure will have been completed successfully when:
- The app shows that the procedure has been completed successfully.
 - The Wi-Fi Led is steady on.